

Walled Lake Performance Ensemble

Hi!

We need everyone to come through with the Football Squares fundraiser. Still a lot to sell and many families haven't sold any yet! Please get on it asap.

Thanks,

Nick Pourcho
WLPE Co-Director

Seth Williams
WLPE Co-Director

Announcements

1) February Dues Payments.

Dues payments are the 1st (varsity) and 5th (jv).

2) Football Squares.

Info on this was emailed out and posted in the Band App over a week ago. Only 1 week left to get this done!

3) On/Off Rehearsal (Varsity).

We will be practicing the On/Off process at the Feb. 17th rehearsal from 5-8pm. VERY important we have a lot of parents there to help with this. As you can see, we have a huge setup and it will take a lot of help to get it setup for competitions. We will be setting up a group chat in the Band App for this soon.

4) Bottle Drive.

The bottle drive is well underway and goes all season! Goal for each member (Varsity and JV) is \$100 per member. You can bring the money in at any time through the season. Even if it's just \$20. Just put it in a sealed envelope with your name on it. Put it in the safe or give it to a Director.

5) Feb. 23.

We have to adjust this practice time due to another conflict at the school. Rehearsal that day will be 8am-3pm for Varsity.



Upcoming Events

February 5

JV rehearsal, 6pm-8pm
\$100 payment due

February 6

V rehearsal, 5:30pm-8:30pm

February 7

JV rehearsal, 6pm-8pm

February 8

V rehearsal, 5:30pm-8:30pm

February 12

JV rehearsal, 6pm-8pm

February 13

V rehearsal, 5:30pm-8:30pm

February 14

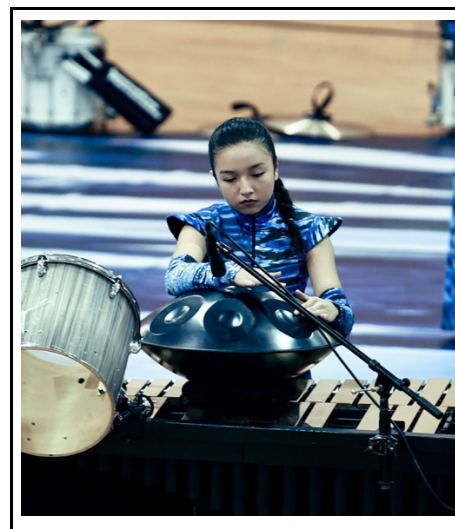
JV rehearsal, 6pm-8pm

February 15

V rehearsal, 5:30pm-8:30pm

February 16

V rehearsal, 5:30pm-8:30pm



"Courage is the greatest of all virtues, because if you haven't courage, you may not have the opportunity to use the others." - Samuel Johnson

www.wlcentralbands.com/wlpe-v
www.wlcentralbands.com/wlpe-jv